

A nail-keg of answers inside this tiny ebook.

Pioneer Log Siding

BUYERS GUIDE

"The Most Incredible Appalachian Log Siding on the Market."



**How the heck
do I know
how much
Pioneer
Log Siding
I'll need?**

Don't just stand there scratching your head... TAKE A GANDER INSIDE!

Table of Contents

Good Important Advise! ORDER EARLY!	3
There should be no need for Costly Samples	4
How Pioneer Log Siding appears is what we Create!	5
If you choose to Stain Pioneer Log Siding yourself, please consider	6
Pioneer Hollow Faux Beams	7
First decide on the Siding widths you want	8
Example A 2" x 12" x 16' boards Diagram.....	9
Example B 2" x 10" x 16' boards Diagram.....	10
Example C 2" x 08" x 16' boards Diagram	11
Example D 2" x 8" / 2" x 10" / 2" x 12" x 16' mixed boards Diagram	12
Example E 2" x 8" / 2" x 10" / 2" x 12" x 16' mixed boards - NO chinking	13
How do I know HOW MUCH siding I'll need?	14
Shipping and Turn - Around Time	15
We Don't Install Pioneer Log Siding but, HERE'S HOW!	16
CHINKING the spaces between siding boards	17
Pioneer Log Siding contact information	18

Good Important Advise! ORDER EARLY!

"A few months ahead if possible, during your planning stages."

Pioneer Log Siding

"The most incredible Appalachian Log Siding sold anywhere."

A Cost effective solution to reclaimed Square Logs



Order your siding in advance, BECAUSE . . .

"We handcraft Pioneer Log Siding, one board at a time."

Like the Amish, Pioneer Log Siding is a unique, hand hewn, hand distressed real wood log siding that requires time to complete. Unlike most lumber outlets that sell factory milled, artificial and boring off the shelf log siding, Pioneer is the real Frontier McCoy, looking incredibly historic and rustically aged.

Orders are placed on a first come basis and we serve one customer at a time before starting the next. When your deposit is received your order is placed. Give us your construction turn-around time and we'll do our best to fulfill your request. We cannot let down those before you, and we **will not** let you down in favor of a newer order!

Smaller orders can take up to 30 - 60 days to complete, while larger orders may take 90 - 120 days. It all depends on the size of your order and how many orders are ahead of yours.

That is why it's IMPORTANT to order as early as possible!

There should be no need for Costly Samples and here's why?

PIONEER LOG SIDING - What You See is What We Create!

"Not a single Pioneer Board will match the next!"

Pioneer Log Siding is a massive product and is viewed best as a whole board. Each piece is totally unique and different. Our website features many nationwide projects. With constant orders underway and meeting deadlines we simply had to refrain from sample making or charge for them.

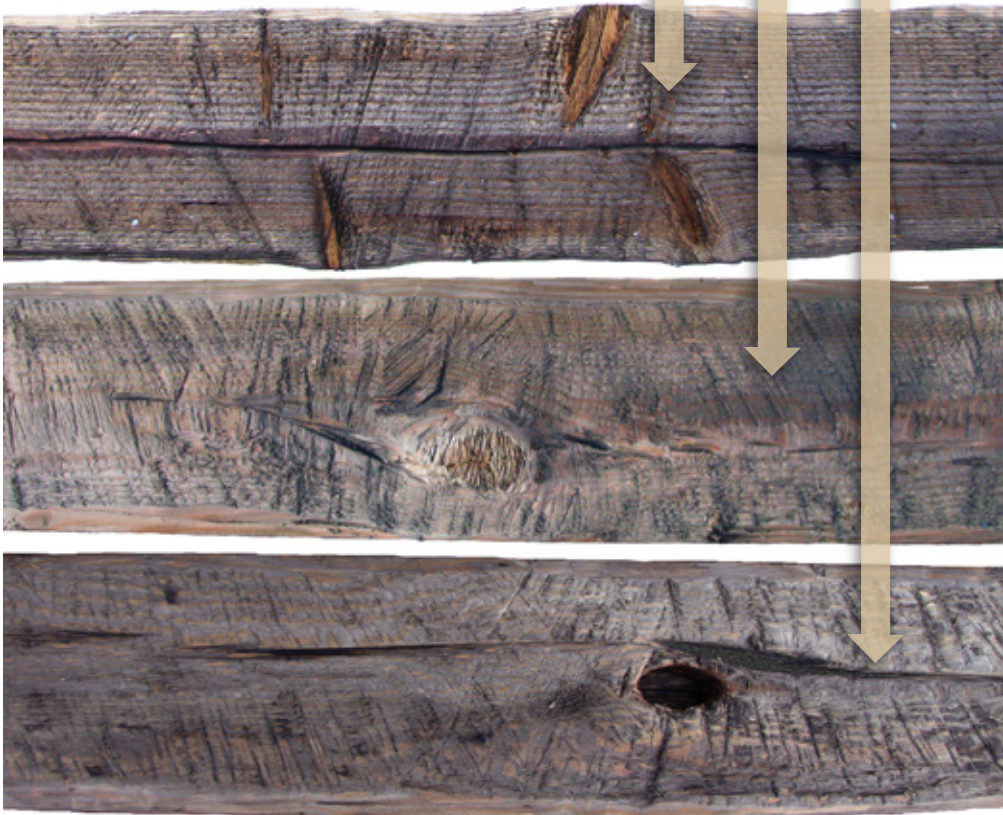
To view Pioneer Log Siding close up and personal please contact any of our nationwide customers for photos of their finished homes or visit them if they are not far from you.

Our siding is custom-handcrafted in the true pioneer tradition. Unlike our competition, our siding is not fabricated with factory milling machines which make all boards identical - and boring! At Pioneer Log Siding all of our boards are unique. My objective is that EVERY piece is hand-hewn and rustically crafted so that when installed, together they look like the historic frontier log cabins we all love.

On our website, WHAT YOU SEE IS WHAT WE CREATE!

However, if samples **are** necessary you can order them here: pioneerlogsiding.com/samples.html

Notice how different these 3 boards appear and yet they've all been crafted from the same Doug Fir, Kiln Dry Wood, then Age-Stain treated in the same Charwood tone. No two boards will ever look alike.



"The Most Incredible Appalachian Log Siding on the Market."

How Pioneer Log Siding appears is what we Create!

“We Hand-Hew and Distress new lumber into rustic Pioneer Log Siding.”

Each board is distressed to simulate the most authentic aged pioneer look possible.



Pioneer Log Siding is cost-effective, thicker, stronger, more energy efficient and with proper care, will last a lifetime. Board cracks, splits and knotholes only add more frontier beauty to our rustic siding. The older our siding becomes the more authentic it appears.

Some lumber companies offer factory milled board's with bevel edges and repetitive grooves leaving a false appearance. Pioneer Log Siding offers only historic, authentic looking siding with the true feeling of the old Frontier.

Each piece of our siding is handcrafted, **with pride**, using several methods of board distressing, such as *chopping, draw-knifing, chain-sawing, hacking, sanding* and *age-staining* to simulate the most authentic true aged look of the Old Frontier.

Pioneer Log Siding ships ready to install when it reaches your site.



*Approx board
Thickness
after distressing
is 1.5 in.*



*Siding board lengths are 16 ft.
Add 15% a lin ft.
for longer siding boards.*

If you choose to Stain Pioneer Log Siding yourself, please consider.

Pioneer Log Siding isn't Pioneer until we've completed our 2 step Age-Staining treatment.

All Pioneer Log Siding is done by hand, over sawhorses one board at a time. Spraying is avoided because of the artificial appearance it leaves.



Why do we do it this Way?

Well, the stain is super thin and we've sculptured countless splits, grooves and cracks into the siding. Now, should you decide to take on the challenge of staining, please do as we do and lay the boards flat across sawhorses. This will avoid countless drips and runs flowing down your beautiful, vertical cabin walls.

Pioneer Log Siding becomes more Authentic as it Ages.

Years from now, should you wish to apply a fresh coat, simply brush it on using the same brand and color of the transparent water-based stain we have used. To touch-up a small area of siding just apply stain to the area then wipe with a wet cloth so color will match. While round logs require constant upkeep, staining and repairs, Pioneer Log Siding ages more gracefully when left alone over time.



If you do choose to stain these boards yourself please refer to staining information on our website at: pioneerlogsiding.com/stain.html

NOTE: We cannot guarantee the same Pioneer Log Siding Look as shown on our web site when done by others.

Pioneer Hollow Faux Beams

**Because of their numerous complexities in widths, heights and lengths -
All Beams are Office-Quoted**

Pioneer Log Siding Hollow Faux Beams

These 3-4 sided laminated Faux beams are strong constructed, hand hewed, pioneer distressed and Age-Stained to match your Pioneer Log Siding.



Interior & Exterior Faux Beams

These hollow wood beams are 1/3rd the weight of solid beams. If you are seeking authentic looking rustic wood beams instead of plastic injection molded beams Pioneer is the real Frontier McCoy.



First decide on the Siding widths you want.

WALL DESIGNS - - *5 suggested wall layout choices.*

Should I use the same size board widths or mix them up?

Well, for the more prosperous Pioneer Up-Town look you may wish to install all Large 12" boards with 2.5" - 3" chinking spaces. But, if it's the rugged Pioneer Woodsman look you're after you could go random with your boards such as, 12"- 8" - 10" mixed, using any size chinking spaces you desire. Just remember to keep your siding rolls as horizontal as possible. With Pioneer Log Siding it's hard not to look Historic.

"However If you want a precise figure on how much siding you'll need, let your Architect, Builder or Contractor decide on how much you'll need and place your order".

However, if you're doing it yourself do it the OL' PIONEER way as shown on [page 14](#).

All boards come in 16' lengths.

Example A

2" x 12" x 16'
boards
2.5" chinking spaces

Example B

2" x 10" x 16'
boards
2.25" chinking spaces

Example C

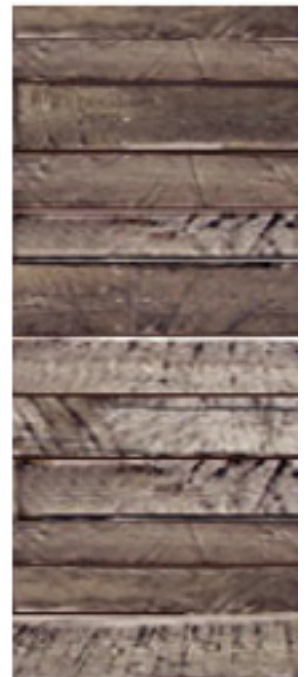
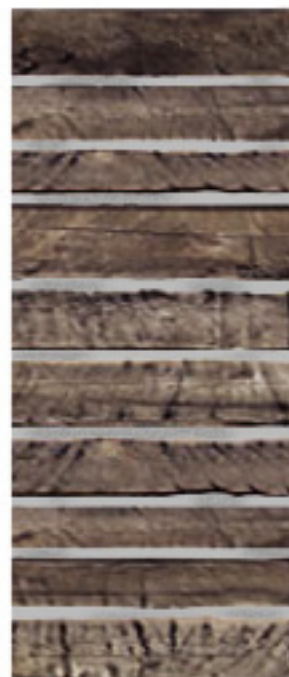
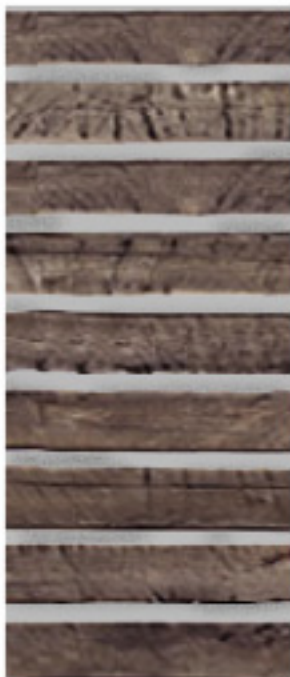
2" x 8" x 16'
boards
2" chinking spaces

Example D

2" x 8"-10"-12" x 16'
mixed boards
2.5" chinking spaces

Example E

2" x 8"-10"-12" x 16'
mixed boards
NO chinking spaces



Go to
[Example A](#)
diagram page.

Go to
[Example B](#)
diagram page.

Go to
[Example C](#)
diagram page.

Go to
[Example D](#)
diagram page.

Go to
[Example E](#)
diagram page.

Example A 2" x 12" x 16' boards – 2.5" chinking spaces

Measure the height and width of each of your walls. Disregard your window and door openings as it is better to have enough than not.



If the wall is taller just add more boards and chinking space sizes.

In this drawing we cut pieces from 16' boards to span 20' feet.

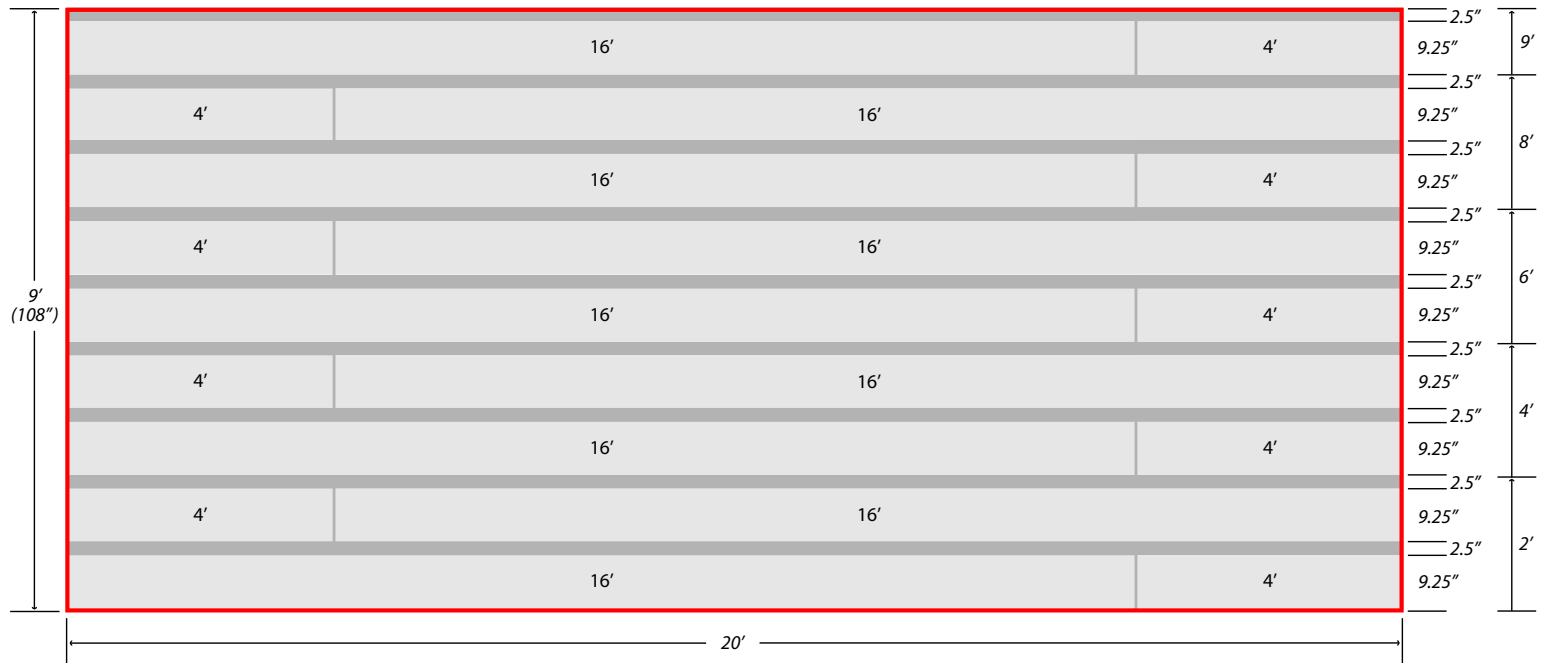
This drawing is not to scale but is proportionate to the different sizes of the boards and chinking space.

"Your walls will vary in length so be sure to order enough extra boards to cut your pieces from."



Example B 2" x 10" x 16' boards – 2.5" chinking spaces

Measure the height and width of each of your walls. Disregard your window and door openings as it is better to have enough than not.



If the wall is taller just add more boards and chinking space sizes.

In this drawing we cut pieces from 16' boards to span 20' feet.

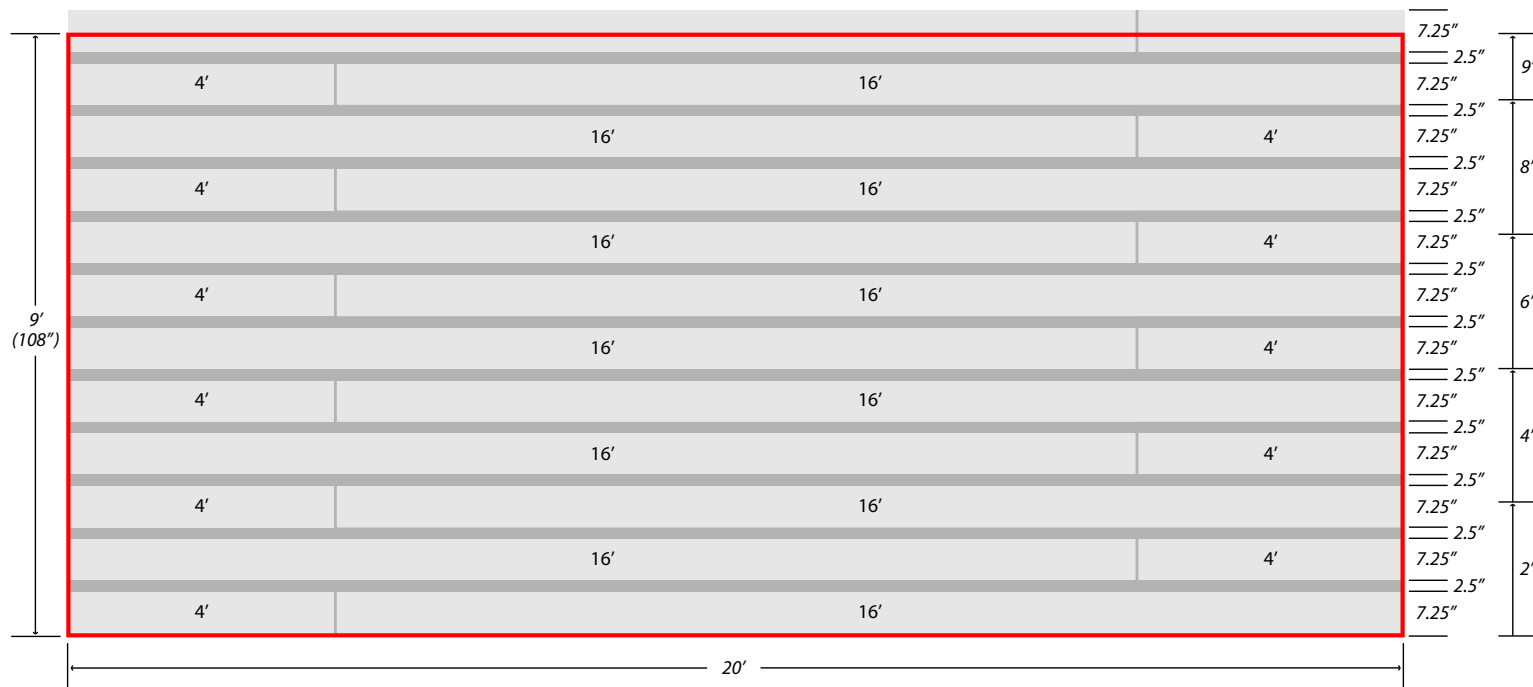
This drawing is not to scale but is proportionate to the different sizes of the boards and chinking space.

"Your walls will vary in length so be sure to order enough extra boards to cut your pieces from."



Example C 2" x 8" x 16' boards – 2.5" chinking spaces

Measure the height and width of each of your walls. Disregard your window and door openings as it is better to have enough than not.



If the wall is taller just add more boards and chinking space sizes.

In this drawing we cut pieces from 16' boards to span 20' feet.

This drawing is not to scale but is proportionate to the different sizes of the boards and chinking space.

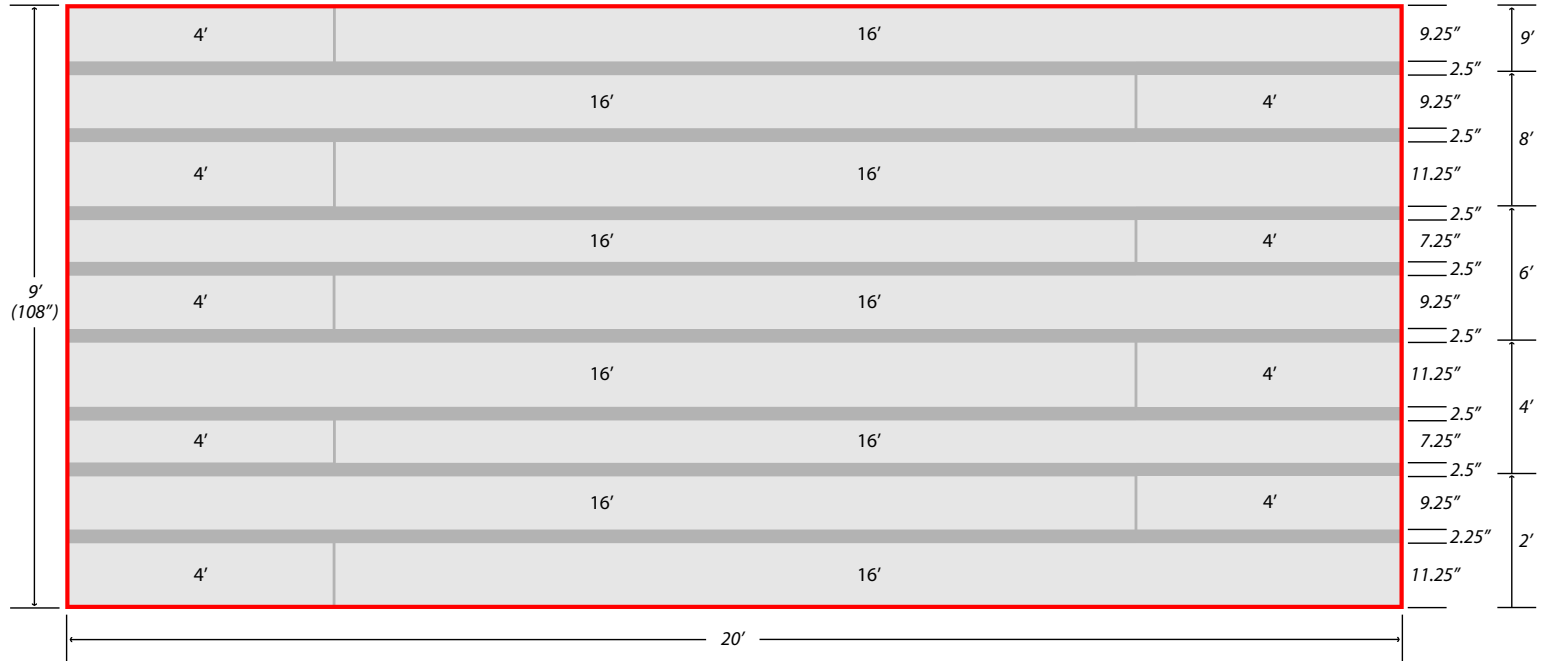
"Your walls will vary in length so be sure to order enough extra boards to cut your pieces from."



Example D

2"x 8"/ 2"x 10"/ 2"x 12" x 16' mixed boards – 2.5" chinking spaces

Measure the height and width of each of your walls. Disregard your window and door openings as it is better to have enough than not.



If the wall is taller just add more boards and chinking space sizes.

In this drawing we cut pieces from 16' boards to span 20' feet.

This drawing is not to scale but is proportionate to the different sizes of the boards and chinking space.

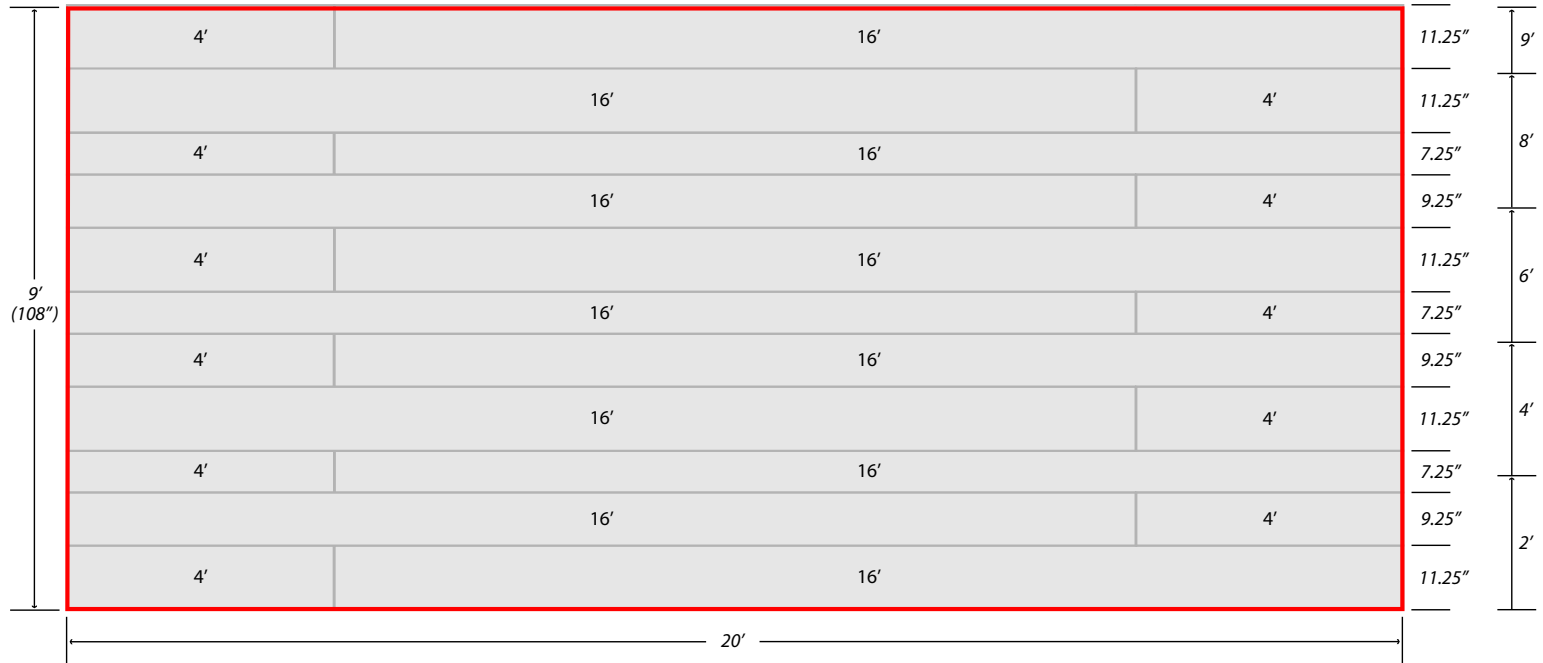
"Your walls will vary in length so be sure to order enough extra boards to cut your pieces from."



Example E

2"x 8"/ 2"x 10"/ 2"x 12" x 16' mixed boards – NO chinking spaces

Measure the height and width of each of your walls. Disregard your window and door openings as it is better to have enough than not.



If the wall is taller just add more boards and chinking space sizes.

In this drawing we cut pieces from 16' boards to span 20' feet.

This drawing is not to scale but is proportionate to the different sizes of the boards and chinking space.

"Your walls will vary in length so be sure to order enough extra boards to cut your pieces from."



How do I know HOW MUCH siding I'll need?

Ordering Pioneer Log Siding is Simple!

Architects & Builders fill out their own orders by using professional take offs.

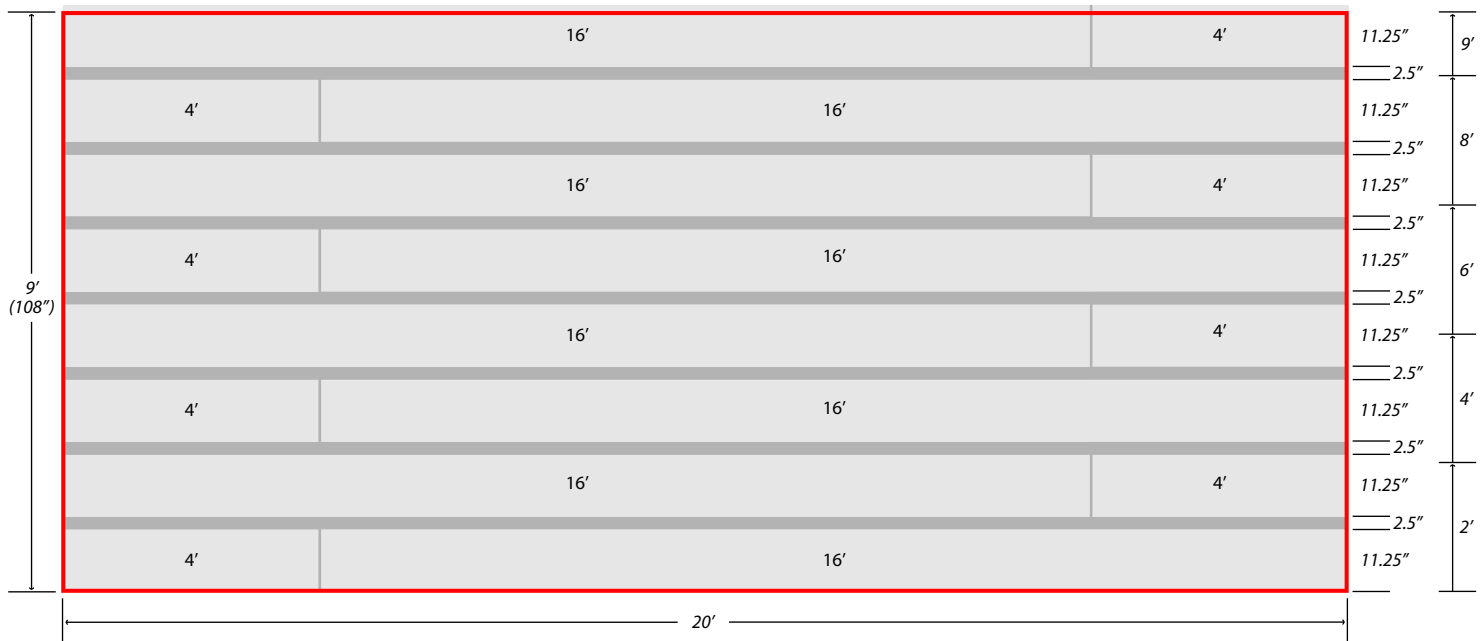
If you have a pro-builder, contractor, have them fill out your Order Form.

Now if you don't have a pro builder on your team and you're figuring your siding needs yourself...

You could do it the Ol' Pioneer way!

Pioneer Log Siding boards come in 16' lengths.

Pioneer Log Siding board widths are 6", 8", 10", 12" – *After distressing: 5.25", 7.25", 9.25" and 11.25"*



The Ol' Pioneer Way!

Measure the Height and Width of each wall. Do not worry about *windows, doors or chinking spaces* because it is always better to have enough siding than not enough.

WALL HEIGHT: As an example, let's say your wall is 9' high - that would be 108". And let's say you've chosen all 12" boards. Divide 108" by 12" that's roughly (9) siding board rows high. It may be over but as we say, it's always better to have enough siding than not.

WALL WIDTH: Now, how many boards would you need across for each row? Well, it all depends on the width of your wall. Figure out how many 16' long siding boards it would take per row to cross the wall, then you can pretty much figure just how much you will need. If you are having a problem ask a building contractor to help you with your take off. We suggest you stagger your siding anyway you wish. We chose to do it the way shown in this diagram. Always stain your end cuts and remember, siding butts do not have to match, *it's Pioneer! Just have fun.* Any extra siding cuts can always be used in other places.

See more diagrams like this on pages 9 - 10 - 11 - 12 - 13 in this book.

For prices on Siding, House Corners, Window and Door Trim, go to [Pricing](#) on our website.

For Pricing on Beams and Posts, go to [Beam Pricing](#) on our website.

SHIPPING and TURN-AROUND TIME

Shipping

Pioneer Log Siding is shipped from Rifle-Silt, Colorado.
The customer is always responsible for freight charges.

Turnaround Time

Smaller orders can take 30-45 days to complete, while larger orders may take 60-90 days or longer. It depends on how many orders are ahead of yours, as well as the size of your order. Orders are placed on a first-come, first-served basis and set when the deposit is received. Remember, each Pioneer Log Siding board is custom crafted and **well worth the wait!**



"All Quotes are Guaranteed for 30 Days"

Pricing is subject to change and dependent on cost and availability of materials.



Dennis Smith

SHIPPING NOTE:

We normally suggest Amino Transport, a nationwide company.



Ask for Dennis Smith, **866-352-6557**.

He is good at locating haulers heading your way and generally saves costs by piggybacking loads with other shipments.

We Don't Install Pioneer Log Siding but, HERE'S HOW!

Pioneer Log Siding installation is easier than you think!

The Best Way to Install Pioneer Log Siding.

Our siding can be installed on most any flat surface. Before you begin, make sure your structure is covered in a brand-name plastic weather guard such as Tyvek. We recommend installing from the bottom up using spacer strips between your siding boards.

Use Spacer Strips between your siding boards.

Spacer strips should be 3/8" or 1/2" thick plywood or particleboard in 8' lengths. You may cut your strips any width, be it 2", 2-1/2", 3" or more, depending on the finished look you desire. The strips provide room for [chinking](#) and also help support your next siding board run.

Important! Before installing spacer strips you must cover the face of each spacer strip with a plastic packing tape so that the strips are slick. We suggest tan rather than clear so you can see what you're doing. The reason for this is explained on the [chinking](#) page.

To avoid board warping, install the siding with small-headed 2-1/2" – 2-3/4" deck screws.



Small-headed 2-1/2" – 2-3/4"
Deck Screws

For more detailed information about installing your Pioneer Log Siding go to our website at: pioneerlogsiding.com/install.html

CHINKING the spaces between siding boards

Chinking Between Boards

What is Chinking?

Chinking was used to fill imperfect spaces between the logs and thereby, insulate their pioneer cabins. It also added a very special charm to those old historic homes. To install chinking between pioneer log siding you must first install spacer strips. Next, apply a typical plastic packing tape over your strips.

Why Cover your Spacer Boards with Plastic? [See Installation](#)

This important step in the chinking process is done because you want the material to stick only to the top and bottom edges of the siding boards. The material dries to a hard rubber-like substance and as the siding shrinks a bit after installation; it needs to slide freely over the tape so that the chinking will not pull away from the siding, leaving cracks and unprotected spaces.

OK, Now That I've Done That, What's Next?

At this point, we suggest that you find a professional in your area to do the work. However, if you are the adventurous type, the Internet is full of information about how to chink. Once you have decided on the overall look, you can use a smooth finish or make it a bit rough for the more rustic, pioneer look. Be careful not to make it too sloppy - just have fun with it!

IMPORTANT! As you are chinking, never fill the spaces more than 3/8"-1/2" thick as it will not cure well. Also you do not want to cover the beautiful, hand-hewn edges we've created. Just make sure the top and bottom edges are sealed well. As an added bonus, this method will give you big-time cost savings!

Also, very important... NEVER CHINK IN WINDY WEATHER OR IN DIRECT SUNLIGHT AS IT WILL DRY TOO QUICKLY ON TOP BUT NOT WELL UNDERNEATH.



NOTE: I personally do not care for white or light-colored chinking because very light colors tend to upstage the siding so that, from a distance, all you see are white stripes. I prefer a semi-dark tone in grays or tans to enhance the look of the siding.

" We are located in Coupeville Washington near the Heart of the Lumber Industry."

Visit our website at: pioneerlogsiding.com



Contact Us With Any Questions You Might Have.

Call Richard or Chris at:
360 544-8338

Email us at: pioneersiding@yahoo.com



What some of our Nationwide customers are saying about Pioneer Log Siding.

" My wife and I have built a cabin on 6 wooded acres in Herman Missouri. After much research, we found Richard and Pioneer Log Siding. We highly recommend Richard and his product, it is truly refreshing to meet a craftsman that takes such pride in his work! "

★★★★★ – Jeff & Suzy Hutson
Herman, Missouri

" My wife and I recently built a mountain home in the Washington Cascades using Pioneer Log Siding, not only for the exterior walls but for the interior walls too. "

★★★★★ – Rob Thompson
Seattle, Washington

" We are extremely pleased with the look and the quality of the siding. "

★★★★★ – Sandy and Gary Glover
Morton, Illinois

" Guests to our home cannot believe that our house is "faux" square log; they touch and poke and still can't believe this is siding versus full square log. We LOVE it, and as an added bonus, we gained Richard as a friend! "

★★★★★ – Steve and Elizabeth Nagelkirk
Marquette, Michigan